

CHIMACUM WATERSHED MANAGEMENT & IMPROVEMENT PLAN

Jefferson County
Conservation District

Joe Holtrop, Manager



Today's Topics

- How we got here
- Where to next
- How to get there

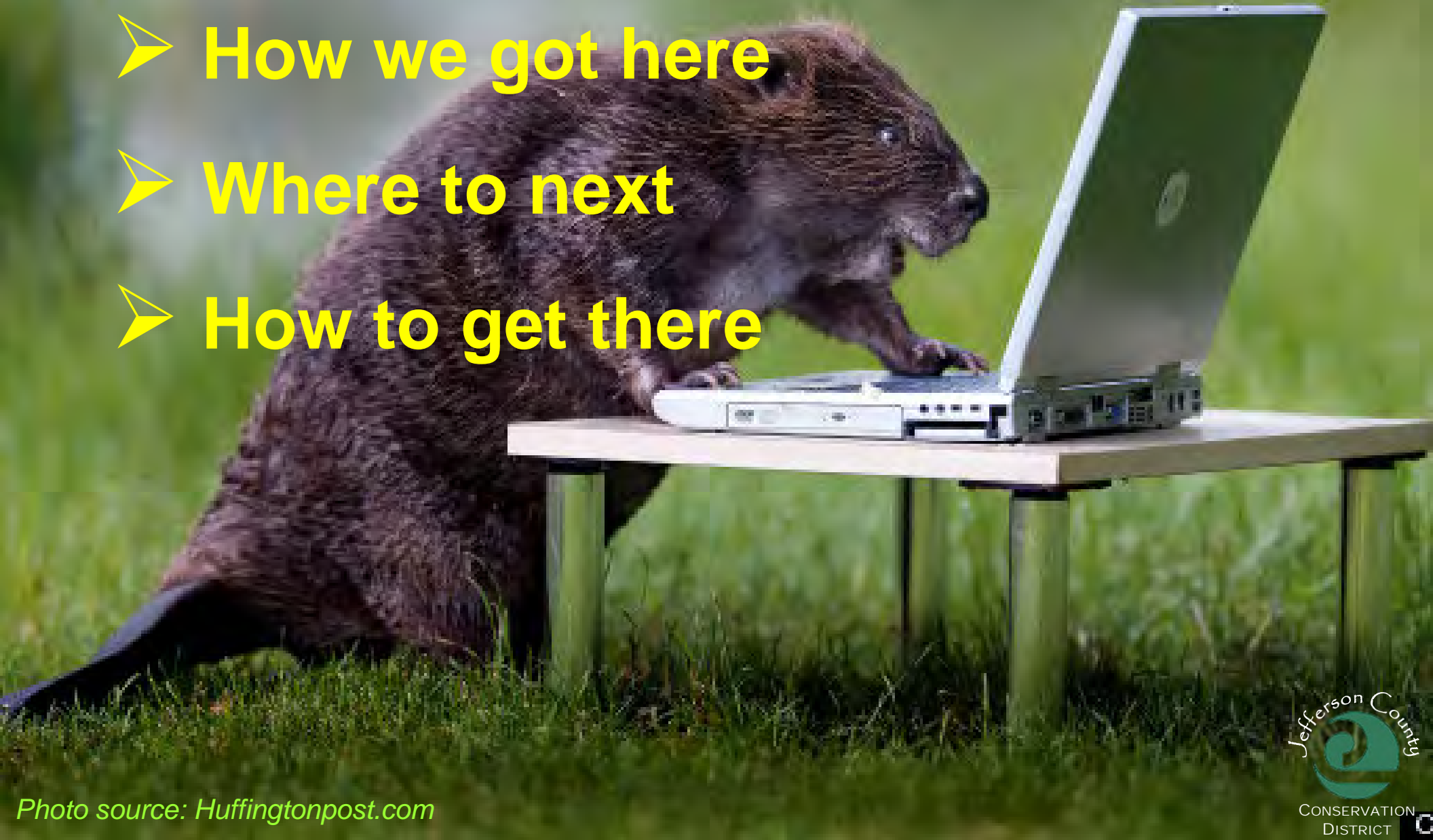


Photo source: Huffingtonpost.com

Jefferson County Conservation District

jeffersoncd.org

Sub-Division of State Government

Established in 1946

Mission:

To maintain economically viable agriculture and forestry operations, while protecting and improving the natural resources of Jefferson County by providing technical assistance...

How We Got Here

Late 1800s – Forest Conversion to Farmland

1919 – Chimacum Drainage District Formed

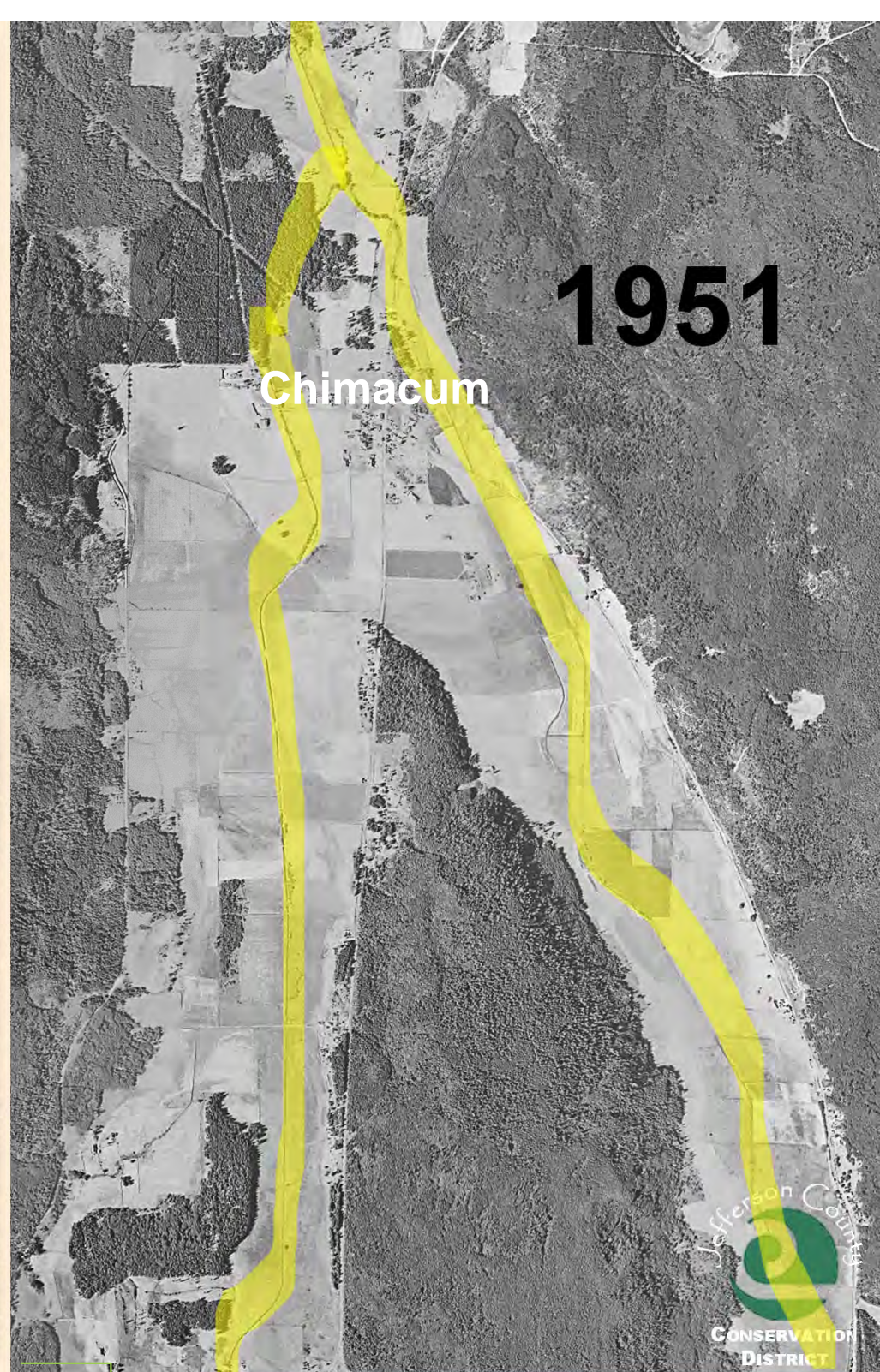
1920s – Stream Straightened, Ditches Dug

1950s – Reed Canarygrass Introduced

1960s – Beavers Reintroduced

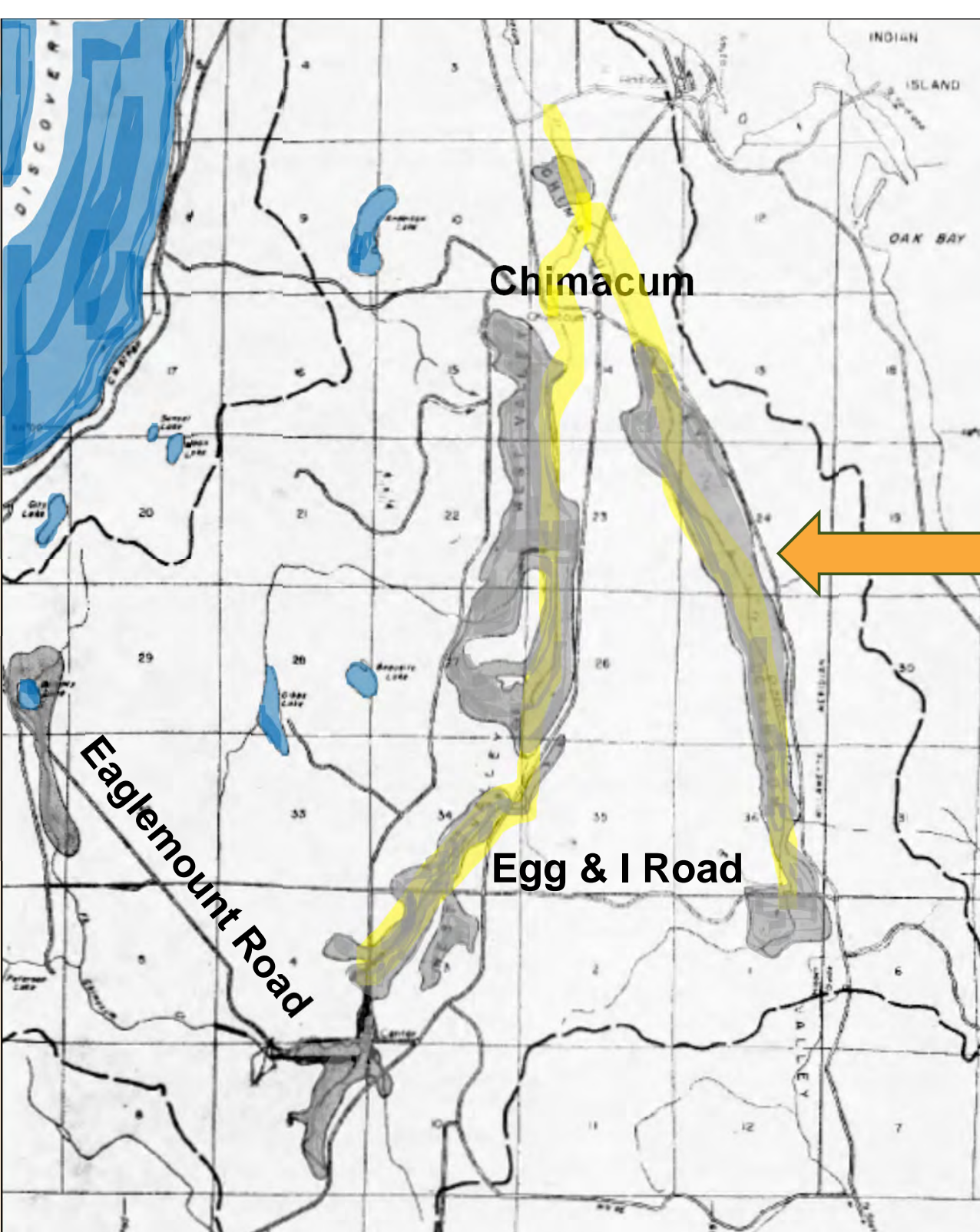
1974 – Drainage District formally Inactive,
Maintenance left to Landowners

1990s-present – Riparian Restoration



1951

Chimacum



Soil Conservation Service Drainage Improvement Plan, 1956.

Chronically flooded areas.

Plan wasn't implemented.

1974

**Drainage District
commissioners resign.**

**Drainage District formally
declared inactive.**

**Individual landowners assume
drainage maintenance
responsibilities.**

**1980s
and
1990s**



Water Quality

- ✓ **Cows fenced out of streams**
- X **Reed canarygrass flourished**



**1990s
and
2000s**



Riparian Planting

- ✓ **Shade out reed canarygrass**
- ✓ **Enhance stream habitat**

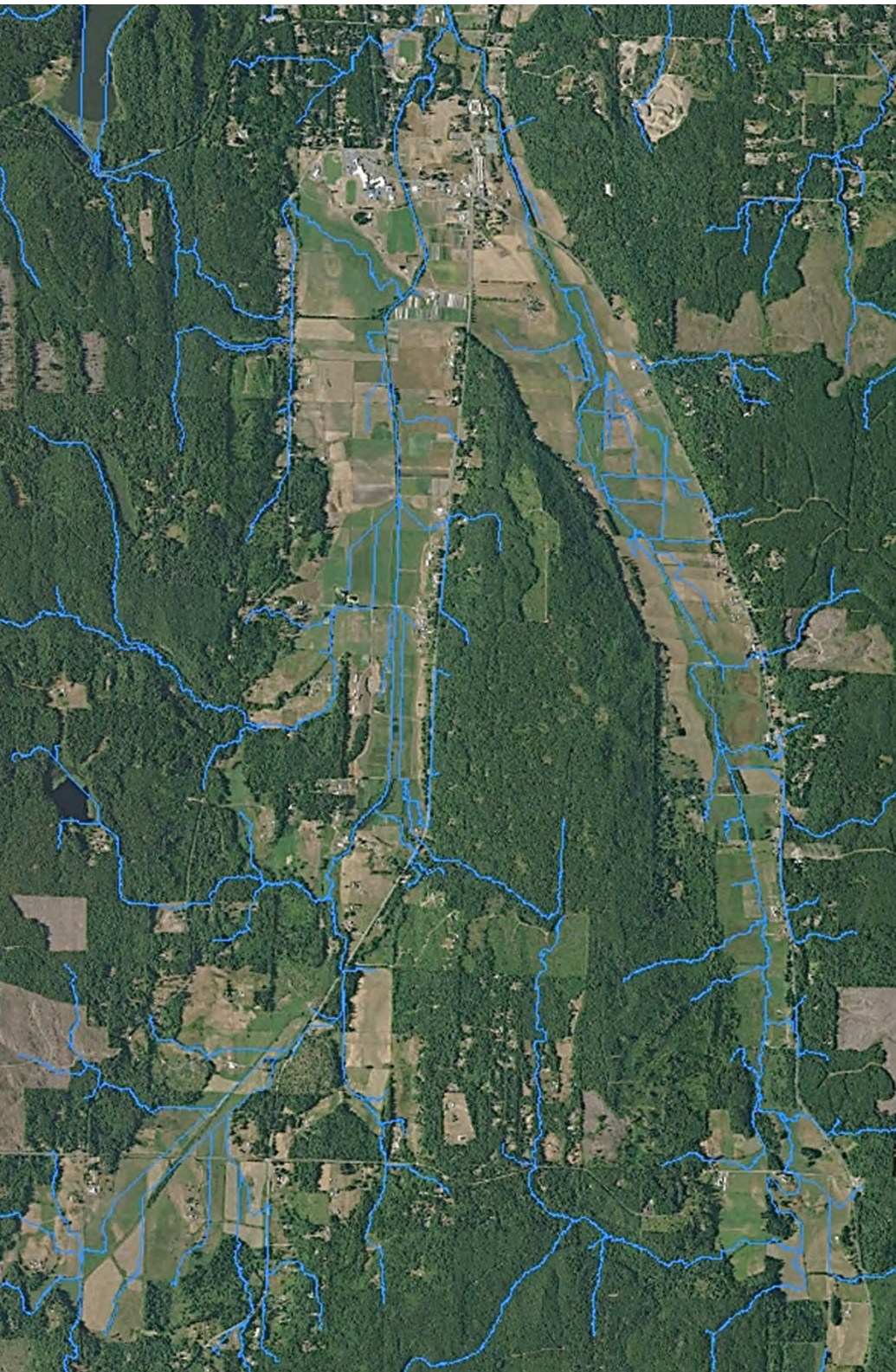


2000s to Present



Beaver

Chimacum Valley Present-Day



What's Next?

Chimacum Watershed Management & Improvement Plan

Focus on:

1. Drainage and Flood Control
2. Ecosystem Restoration

Plan Elements

Watershed Assessment

Identify and Describe:

1. Drainage and Flooding Problems
2. Long-Term Viable Farmland
3. Habitat Restoration Opportunities
 - Wetlands
 - Streams

Plan Elements

Management & Enhancement

Identify and Describe:

1. Ongoing Drainage System Management

- ✓ Regular Maintenance
 - BMPs
 - Permitting
 - Cost Estimates
 - Possible Funding Sources
- ✓ Maintenance Practice Guides

Plan Elements

Management & Enhancement

Identify and Describe:

2. Special/Large-Scale Projects

- ✓ **Drainage System Improvement**
 - Permitting
 - Cost Estimates
 - Possible Funding Sources

- ✓ **Water Quality Improvement, Habitat Restoration**
 - Permitting
 - Cost Estimates
 - Possible Funding Sources

Plan Elements

Implementation Mechanisms

Identify and Describe:

1. Legal Structures

- Drainage District
- Watershed Improvement District
- Other

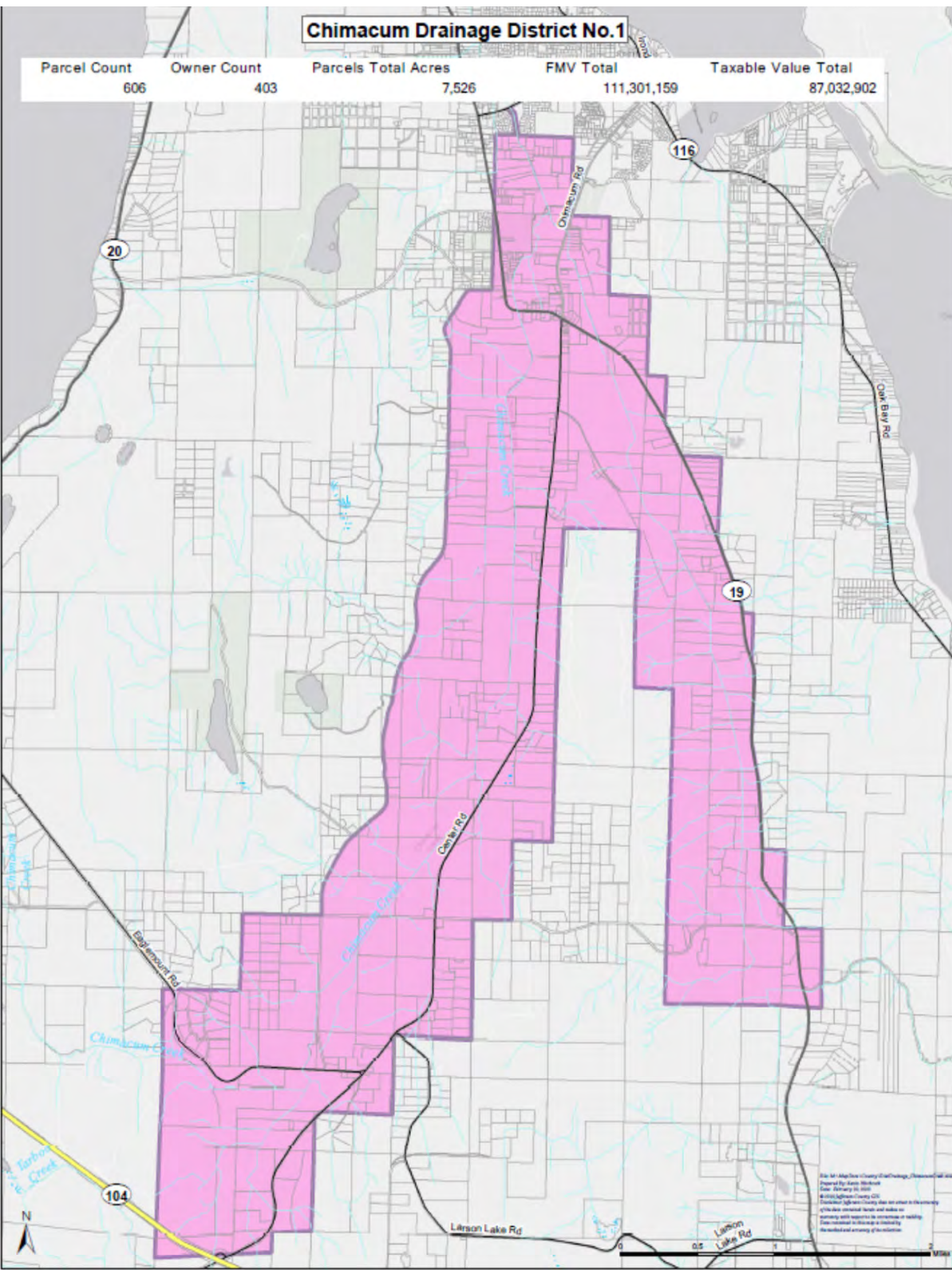
2. Partner Organizations

- Roles and Responsibilities

3. Monitoring and Adaptive Management

Chimacum Drainage District No.1

Parcel Count	Owner Count	Parcels Total Acres	FMV Total	Taxable Value Total
606	403	7,526	111,301,159	87,032,902



Drainage District with 2020 Tax Parcels

Community Engagement

1. Focus Group Meetings

- Community Members and Organizations
- Regulatory Agencies

2. Website:

www.jeffersoncd.org/chimacum-creek

Focus Groups

1. Current Conditions

- **West Valley**

Thursday, March 7, 6:30-7:30 p.m.

- **East Valley**

Tuesday, March 12, 6:30-7:30 p.m.

2. Management Options

March 19, 6:30-7:30 p.m.



QUESTIONS?

Joe Holtrop

jholtrop@jeffersoncd.org

360-554-8066

jeffersoncd.org

