



LIVING WITH BEAVER

strategies for addressing beaver issues on your land

SPEAKERS:

Matt Blankenship, WDFW Wildlife Conflict Specialist

Sarah Doyle, NOSC Stewardship Coordinator

Jill Zarzeczny, JCCD District Manager



Strategies for Living With Beaver

- ❖ Overview of beaver habitat and behavior
- ❖ History of beaver in the Chimacum Watershed
- ❖ Beaver management and control techniques
- ❖ Available assistance to landowners with beaver

Life as a Beaver

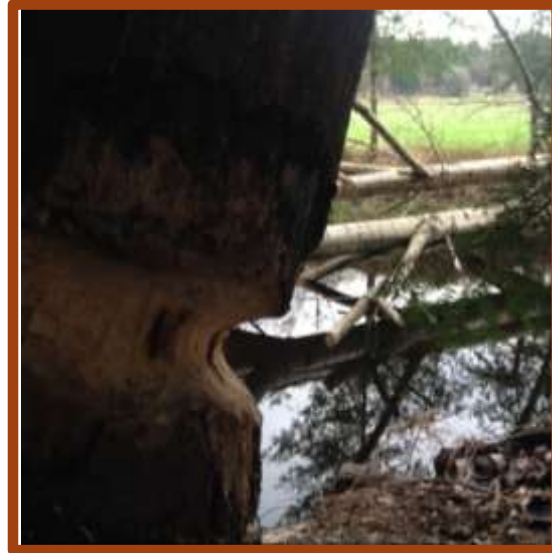
General description

Behavior

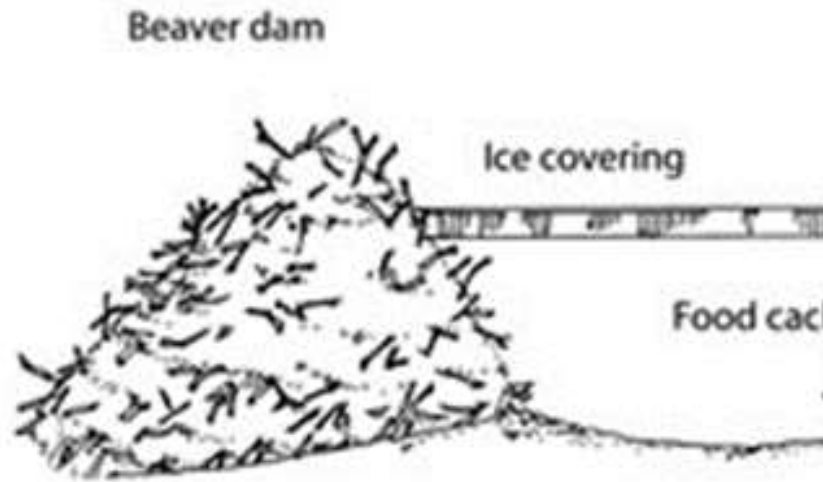
Habitat Needs

- ❖ water
- ❖ wood

- Preferred PNW species: alder, apple, birch, cherry, cottonwood, and willow



Nature's Engineers



Beaver in the Chimacum

Historic Presence

A Changing Landscape

- ❖ Early 1900's: Stream channelization and flood control
- ❖ Early 2000's: Changing laws and buffer establishment

Local Challenges

- ❖ Proximity to sensitive infrastructure and agriculture
- ❖ Poorly draining soils
- ❖ Reed canarygrass infestations

What Are We Trying to Do?

- ❖ addressing undesirable impacts
 - ✓ Maintain drainage
 - ✓ long-term flood prevention



Beaver Management and Control

addressing undesirable impacts

- ❖ Site planning
- ❖ Responding to beaver activities on your land
- ❖ Monitoring and maintenance



Todd Spedding

Preventative Site Planning

Suitable beaver habitat

- ❖ Reach has habitat characteristics to support beaver populations
- ❖ Potential impact to resources or infrastructure is minimal or can be mitigated

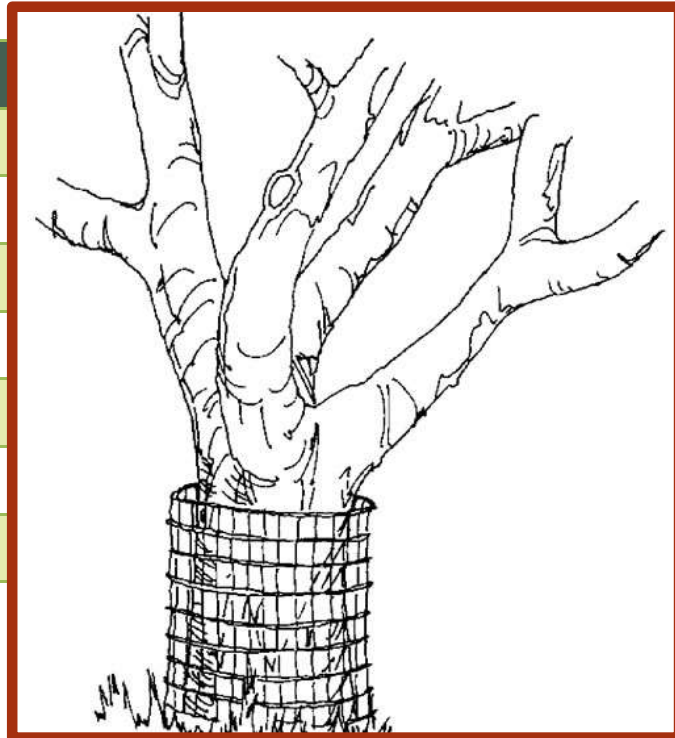


Beaver Conservation Zone – Living with Beaver Zone – Nuisance Beaver Zone

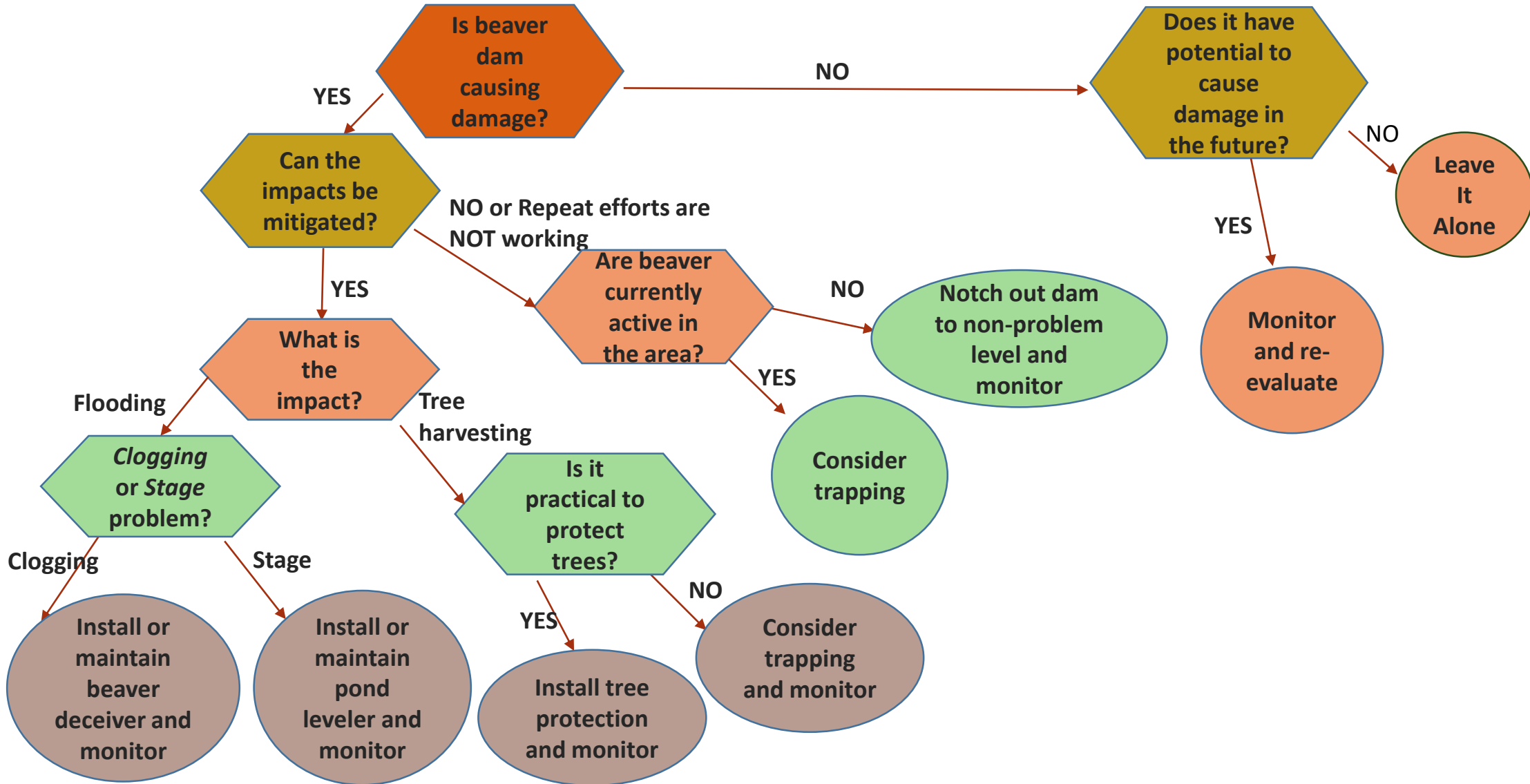
Preventative Site Planning

Designing riparian buffer projects with beaver in mind

- ❖ Reduce or eliminate most desirable tree or shrub species
- ❖ Protect newly planted trees where beaver are likely to inhabit



Responding to Beaver Activity on Your Land



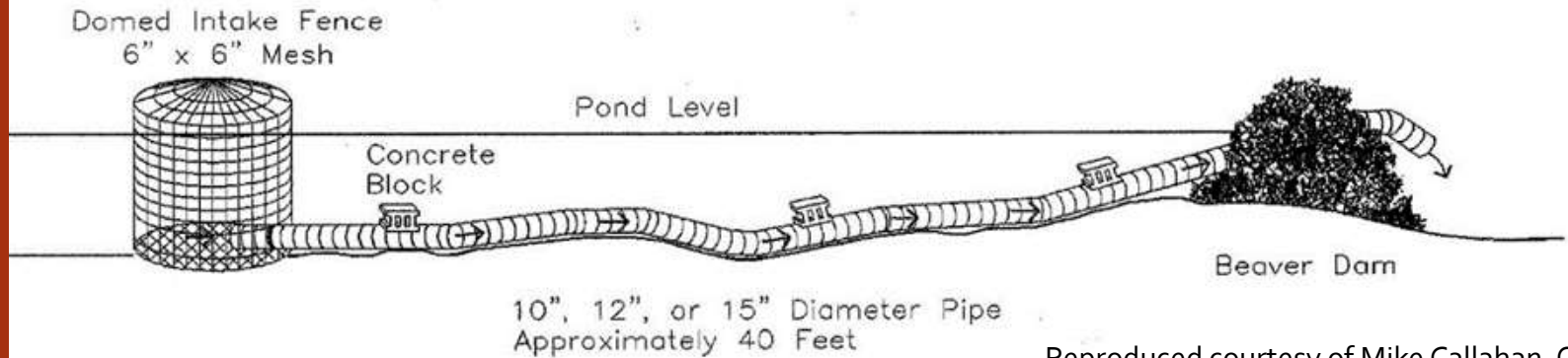
“Living with Beaver” Strategies

Resource Concern	Suggested Best Management Practice
Protection of Individual Trees	Cylindrical Cages
	Textured Paint Mixture
Protection of Planting Site	Low Fences
	Species Selection and Placement
Flood Prevention	Beaver deceiver
	Flow leveler
Flood Mitigation	Dam notching
	Trapping

“Living with Beaver” Strategies

Flood Prevention

- ❖ Beaver Deceivers
- ❖ Flow Levelers

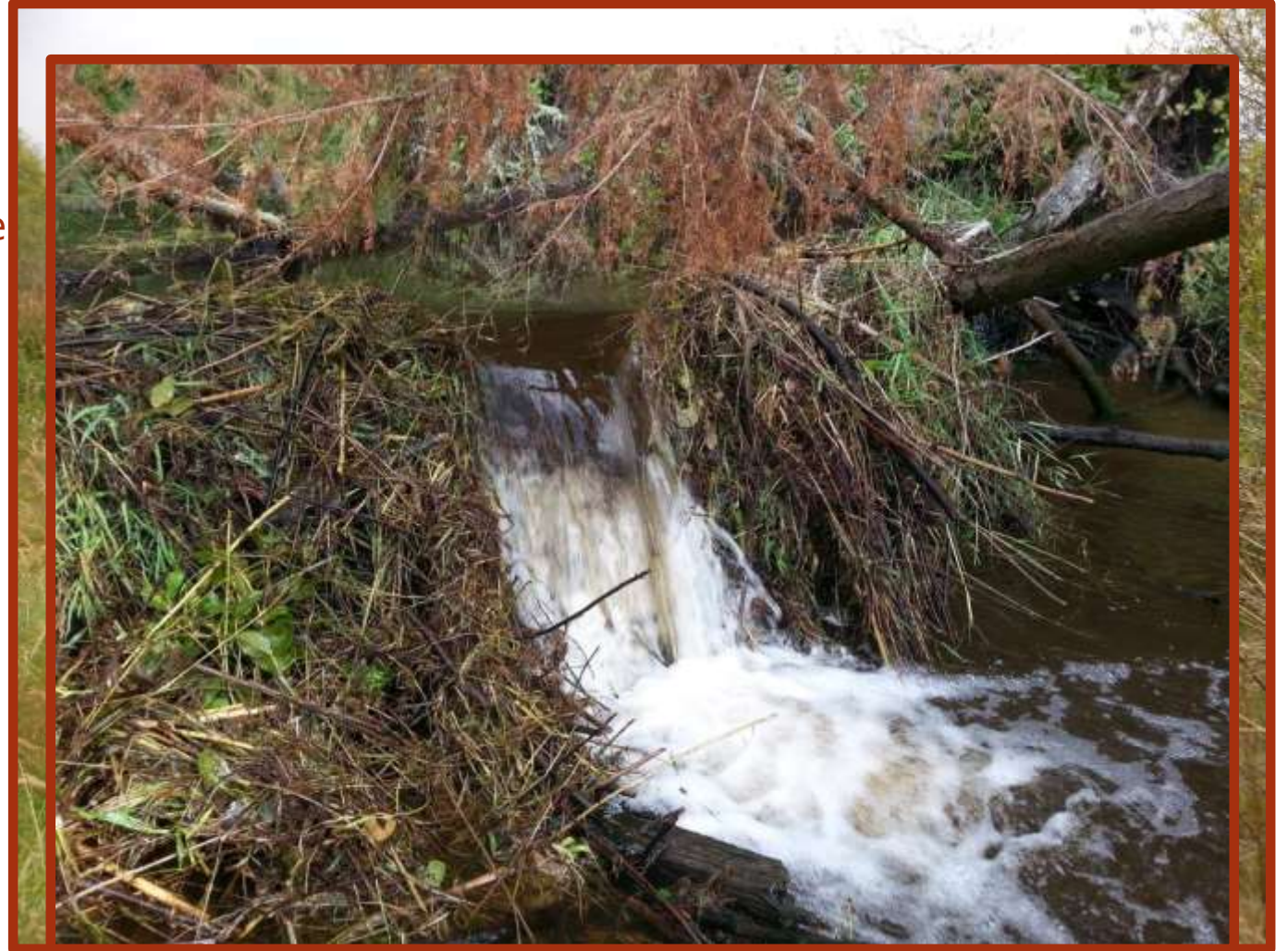


Reproduced courtesy of Mike Callahan, Owner
Beaver Solutions LLC, "Working With Nature"

“Living with Beaver” Strategies

Flood Mitigation

- ❖ Notching-out Dams: A short-term rapid response to prevent immediate damage from flooding
- ❖ A Hydraulic Project Approval (HPA) is required to remove or modify beaver dams.
- ❖ Existing *Beaver Dam Modification HPA* for the Chimacum Creek Watershed (exp. Sept 2019)

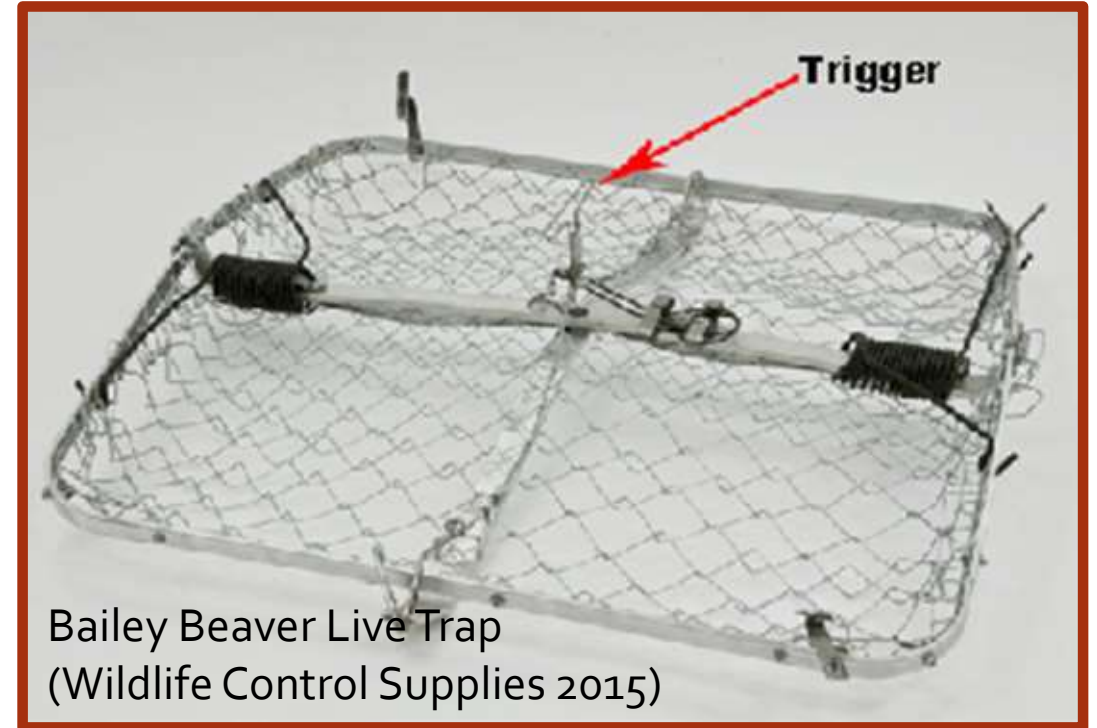


“Living with Beaver” Strategies

Flood Mitigation

❖ Trapping

- Furbearer Classified Species: Trapping Season from Nov.1 – Mar. 31
- Special permits are required for the use of body gripping traps (i.e padded and unpadded foot-hold traps, conibear type traps, and all snares).
- The owner, the owner’s immediate family, an employee, or a tenant of property may shoot or trap a beaver on that property if a threat to crops exists ([RCW 77.36.030](#)). In such cases, no special trapping permit is necessary for the use of live traps. However, a special trapping permit is required for the use of all traps other than live traps ([RCW 77.15.192](#), [77.15.194](#); [WAC 232-12-142](#)).
- It is currently unlawful to release beaver anywhere in the state, other than the property it was trapped on, without a special permit to do so.



Bailey Beaver Live Trap
(Wildlife Control Supplies 2015)

Monitoring and Maintenance

- A long-term relationship with beaver
- Recruiting volunteers for the “Dam Busters”



Available Assistance

- Jefferson County Conservation District
 - HPA application support
 - Technical Assistance – site planning, *living with beaver* evaluations, etc.
- North Olympic Salmon Coalition
 - Technical Assistance – Site planning and adaptive management.
- Wa. Department of Fish and Wildlife
 - Wildlife Control Operators licensed by WDFW. Please refer to wdfw.wa.gov to find WCO's in your county.
 - In emergency situations (when an immediate threat to property or life exists), verbal approval from WDFW can be obtained for work necessary to solve the problem. A 24-hour hotline (360) 902-2537 is available for emergency calls during nonworking hours. During normal hours, contact your nearest [WDFW Regional Office](#).
 - Contact WDFW Conflict Specialist for more information and strategies on preventing conflicts on your property.



Questions?

Online Resources

Beavers Northwest

www.beaversnw.org

Beaver Solutions

www.beaversolutions.com

Beavers: Wetlands and Wildlife

www.beaversww.org

WDFW: Living with Beaver

wdfw.wa.gov/living/beavers.html

